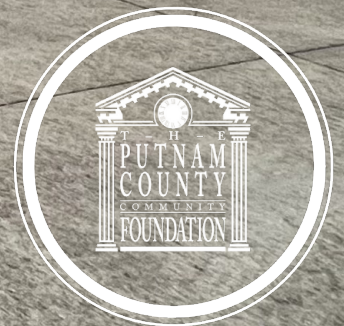




Putnam County Community Foundation

# 2022 Annual Report

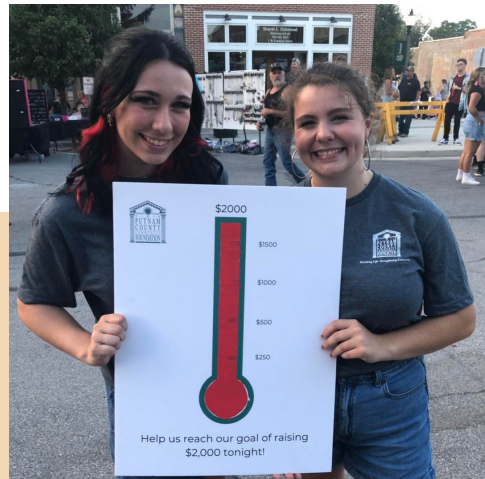




**Enriching Life.**  
*Strengthening Community*

The Putnam County Community Foundation is a 501(c)3 nonprofit public charity established in 1985 to administer endowments in perpetuity, award grants, and provide leadership, enriching the quality of life and strengthening community in Putnam County, Indiana. The Community Foundation administers more than 350 funds and endowments supporting a variety of charitable activities and has awarded \$21 million in grants and scholarships since inception.

The Community Foundation holds, invests, and administers a collection of separate funds, valued at roughly \$37 million, established to meet the philanthropic goals of donors and the needs of Putnam County. It is a vehicle through which contributions of any size can be built over time into a substantial pool of money to achieve public good for Putnam County. The income from this pool is awarded in the form of grants to meet community needs and aspirations of current and future generations.



Top: Youth Philanthropy members Ruby Sullivan and Caroline Hodge at a community event  
Middle: Artist Alexander Isakov at work, 2022 Putnam County Mural Project  
Bottom: Past President and one of the Community Foundation founders Robert Evans at the Annual Meeting  
Cover: Putnam County Mural Project, credit John Lobban Creative

## A Letter from our Leaders



Neysa Meyer and Marianne Savage

Dear Foundation Family,

Impact, stewardship and legacy are some of the words we consider as we prepare our annual report for you each year. Not because each year is the same, but because even after nearly 38 years, the Putnam County Community Foundation remains committed to our mission of enriching lives and strengthening communities here in Putnam County. While our work may be complex, our goal is simple: make our community a great place to live, work and play. We seek to reach this goal by mobilizing philanthropy, leading in the community, and operating with excellence.

In this report, we hope you find stories of community impact, demonstrated examples of good stewardship and perhaps even an idea to build your own philanthropic legacy alongside the Community Foundation.

We're grateful to you for placing your trust in the Putnam County Community Foundation. It's our privilege to carry out the promise of philanthropy in Putnam County, to honor the legacies of our donors and to serve our community as you have guided us to do.

With gratitude,

Marianne Savage, Board President

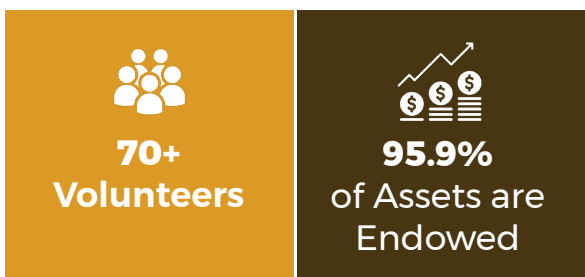
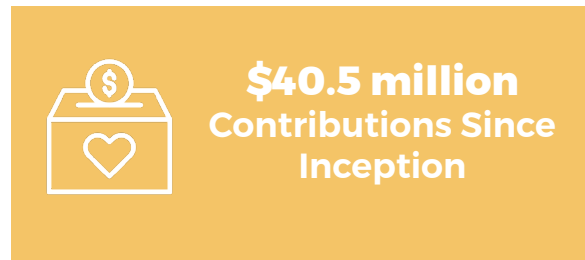
Neysa Meyer, Executive Director

Find more about the stories in this report on our website including our Donor Honor Roll, grantees, scholarship recipients and more. Scan the QR code to find it all in one place.

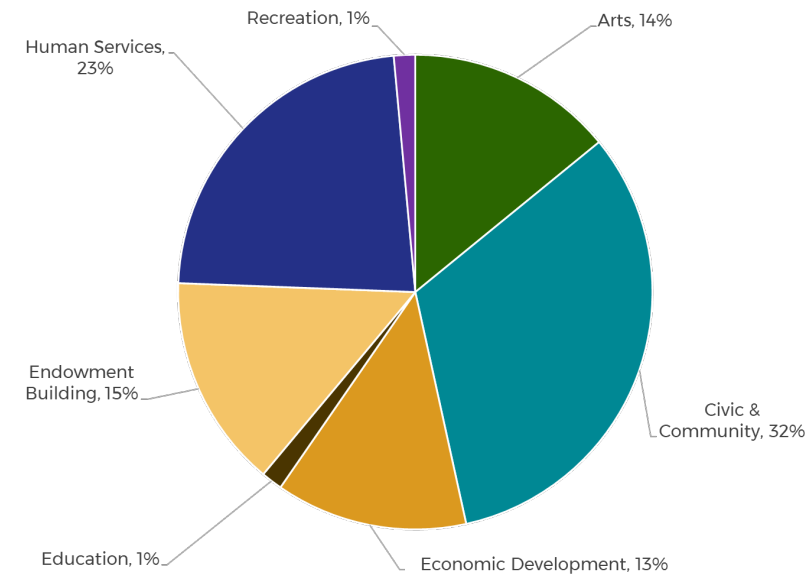


# Mobilizing philanthropy.

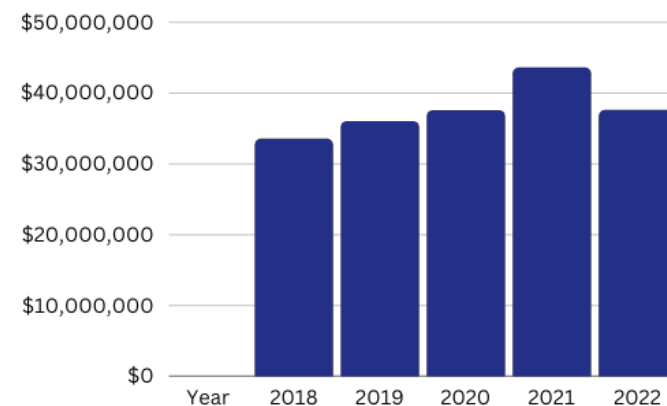
In 2022, the Putnam County Community Foundation impacted Putnam County through philanthropic efforts, including grantmaking, scholarships and special programs. Thank you to our donors and community partners for their help in making 2022 another successful year for the Putnam County Community Foundation.



## 2022 Community Grants by Area of Interest



## Asset Growth Over Last 5 Years



## Preparing Nonprofits for their Future

In 1992, the Humane Society of Putnam County established an organizational endowment with the Putnam County Community Foundation to provide regular and lasting support for its mission. In the thirty years since it was established, the Humane Society of Putnam County Endowment fund has provided the organization with over \$330,000 in support including over \$20,000 in 2022. The Humane Society has also received significant support from additional donors and has been awarded a number of Community Grants from the Community Foundation, totaling over \$500,000 since 1992. This long standing relationship between the Humane Society and the Community Foundation has been a beneficial partnership for both organizations.

The Humane Society's Board of Directors said, "The Humane Society of Putnam County relies upon several endowments at the Putnam County Community Foundation to provide support of the Animal Shelter, transportation of animals and education of the Putnam County community on the care and welfare of animals."



A rescued dog enjoying time at the Humane Society of Putnam County.

## 2023 Putnam County Lilly Scholar



2023 Lilly Scholar Carson Hall and Cloverdale High School Principal Sonny Stoltz

Congratulations to Carson Hall, the 2023 Putnam County Lilly Scholar. Cloverdale High School boasted two Lilly Endowment Community Scholarship recipients: Carson Hall and Emma Paauwe, the Owen County recipient.

Carson is the 42nd Putnam County Lilly Scholar. He plans to attend Indiana University in Bloomington in the fall to study business. He values how Putnam County has shaped his life so far and intends to give back to the community after completing college.

Find a complete list of 2022 grantees and scholarship recipients on our website.

Learn more at [pcfoundation.org/annualreport](https://pcfoundation.org/annualreport).



## Funds Established in 2022

### Impacting Future Generations

In 2022, 16 new funds were established as a part of the Community Foundation's total assets. This included 10 funds, such as the George and Della Dixon Scholarship fund, which were created to provide scholarships to local students. While each of scholarship seeks to support Putnam County youth seeking further educational opportunities, the Dixons' scholarship was created to support traditionally disadvantaged students.



Della and George Dixon

George and Della have been part of the Putnam County community for over 40 years, enjoying a quiet life in a community that shares their values. Without children of their own, both George and Della wanted to support students who might not otherwise receive assistance to reach their goals after high school. Their scholarship was originally intended to be left as part of their estate through a planned gift, but then they thought, "Why not see some of the impact this scholarship can make while we're still here to do so?"

"We hope that this scholarship can help even just one student take the first step toward bettering themselves and maybe even the second step to bettering their future," said Della. George continued her sentiment with, "I hope that a student who receives this annual scholarship hears that someone believes in them."

To accomplish this goal, the George and Della Dixon Scholarship fund was set up to benefit students with demonstrated financial need who might not be at the top of the class - those who might not qualify for typical scholarships. As an endowment, this fund will continue to grow and support students for years to come.

George said, "Neither of us went to college, but we worked hard in our careers and want to share what we've earned with students who are willing to work hard to improve themselves too."

## Supporting the Community's Needs



Community Connect is a free annual event providing immediate services to the residents of Putnam County. In 2022, over 500 individuals received resources from the Community Connect event, where they had access to over 46 organizations and vendors offering utility support, free dental and health screenings, financial literacy services and more. Through a newly established fund at the Community Foundation, donors can now support Community Connect with tax-deductible gifts.

"The goal is for our neighbors to learn about resources available to help them provide more stability for their families that they might not have known about otherwise," said Lori Miller, volunteer leader for Community Connect. "A serendipity of the event is that agencies meet other folks serving our community and build connections, learning more of what is available."



Kristie Rambis presents a check to the family of Dan Fouts and the Putnam County Community Foundation on behalf of the North Putnam Touchdown Club.

### Honoring a Legacy

The North Putnam Dollars for Scholars Dan Fouts Scholarship fund was created in memory of long-time coach and teacher, Dan Fouts, by his family. To ensure that this fund reaches its full potential and carries on his legacy, the North Putnam community came together to raise over \$20,000 for the fund in just one week.

North Putnam Touchdown Club organizer Kristie Rambis challenged the local business community and North Putnam alumni to donate \$500 each to the cause. Over 40 businesses and individuals rose to the challenge.

"We were going to do whatever it took to help Dan's wife, Betsy, get to the goal she needed to keep Dan's legacy alive in the hearts of North Putnam. And boy did we ever hit that goal and then some," said Rambis.

"What a testimony to Dan and his family that so many wanted to participate in this challenge to show appreciation for all he did for our school and community in the lives he touched daily."

16 New  
Funds  
Opened in  
2022

Find a complete list of funds established in 2022 on our website.

Learn more at [pcfoundation.org/annualreport](https://pcfoundation.org/annualreport).



# Leading in the community.

The Putnam County Community Foundation is proud to serve as a philanthropic leader. We do so by actively engaging members of the community, nonprofit organizations and others in special programs and initiatives.



Presenter Susan Decker speaks at a session of the Nonprofit Learning Series.

## Supporting Local Nonprofit Organizations

At the Putnam County Community Foundation, we take pride in working closely with local nonprofit organizations, ensuring they have the resources needed to meet their missions.

Over 300  
Local  
Nonprofits

The Putnam-Montgomery Nonprofit Learning Series provides capacity-building opportunities for nonprofits and other charitable initiatives that serve Putnam County. These workshops, led by content experts, are designed to inspire, educate, and connect our nonprofit employees, board members, volunteers, and other interested community members.



Neysa Meyer presents the Spirit of Philanthropy Award to Alan Zerkel.

**The Spirit of Philanthropy Award** is the highest honor bestowed by the Board of Directors of the Putnam County Community Foundation and recognizes persons who have demonstrated extraordinary philanthropic spirit and accomplishments. In 2022, we proudly presented this award to Alan Zerkel. Alan has served in varying capacities with the Putnam County Public Library, Beyond Homeless, Kiwanis, Real Men Who Read, and Roachdale Christian Church among others. He is also an Honorary Board Member of the Community Foundation and continues to serve as a member of the Scholarship and Educational Attainment Committee. Alan's legacy will live on in perpetuity through the North Putnam Dollars for Scholars - Zerkel Family Scholarship, benefiting students from North Putnam High School where Alan acted as principal for twenty of his 40-year career in education.

## Wiatt Family Philanthropy Essay Contest

The Darrell Wiatt Family Philanthropy Essay Contest was established in 2006 by Darrell Wiatt, a passionate community member and former educator at the North Putnam Community School Corporation. Through the program, the Putnam County Community Foundation hopes to recognize everyday philanthropists in Putnam County and ensure that no child graduates from high school without knowing the meaning of the word "philanthropy".



Luna Pope and Jeanette Pope

Greencastle Middle School's Luna Pope was the 2022 Essay Contest winner, earning Castle-makers, the charity of her choice, a \$150 grant and Greencastle Middle School a \$500 grant.

Pope's essay, titled *Time and Talent Are Just as Important as Treasure*, was written about her mother's work in the Greencastle and DePauw University communities. In part, she wrote, "Philanthropy is the desire to promote the welfare of others. This is normally done through large donations of money, but some people, like my mom, use time or professional skills instead. My mom is the philanthropist I know personally and admire the most because she is a great multitasker who helps the people in Greencastle and Putnam County."



# Operating with excellence.

The Putnam County Community Foundation seeks to provide exceptional customer service to our philanthropic partners while upholding values of integrity and transparency. We demonstrate this commitment to excellence in all areas of our work.

## Protecting Our Investments

The Putnam County Community Foundation invests funds using both a Moderate Growth Pool (MGP) and Aggressive Growth Pool (AGP) Portfolio managed by professionals at Mason Investment Advisory Services. As the market dipped in 2022, both the MGP and AGP asset allocation strategies declined 12% and 13%, respectively, but performed well against their benchmarks.

Looking at the market, energy was the best performing asset class for the second consecutive year, returning 63% for the MGP and AGP Strategies.

Returns in this sector were buoyed in part by increased demand for crude oil and natural gas during a period of record-high inflation. These strong returns triggered the Community Foundation's 30% rebalancing bands that are used for each asset class of both portfolios. Therefore, energy was sold back to its target (4% for both MGP and AGP).

The strategic diversification of these portfolios across a broad range of asset classes provided strong downside protection during adverse market conditions in 2022.



## Earning National Accreditation

The Putnam County Community Foundation received re-accreditation in November 2022 with the nation's highest standard for philanthropic excellence from the National Standards program of the Council on Foundations. National Standards for U.S. Community Foundations establish legal, ethical, and effective practices for community foundations.

*"For donors, this accreditation should instill confidence that their charitable giving is being responsibly stewarded to support the current and future needs of our community. For grantees and other members of the community, it should signify the Community Foundation's equitable and impactful grantmaking efforts. It's something that our entire community should be proud of."*

Jeff McCall, 2021-2022 Board President

## 2022 Financial Report

### As of December 31, 2022

|                                 |     |
|---------------------------------|-----|
| Number of active funds          | 351 |
| Number of donors served in 2022 | 961 |

### Since Inception in 1985

|                                  |              |
|----------------------------------|--------------|
| Cumulative Contributions         | \$40,582,937 |
| Cumulative Grants & Scholarships | \$21,098,363 |
| Cumulative Donors Served         | 8,399        |



## STATEMENT OF FINANCIAL POSITION ON DECEMBER 31, 2022

### ASSETS

|                                                    |                     |
|----------------------------------------------------|---------------------|
| Cash and Cash Equivalents                          | \$1,156,506         |
| Pledges and Other Receivables                      | \$0.00              |
| Prepaid Expenses                                   | \$24,020            |
| Investment (Fair Market Value)                     | \$35,664,754        |
| Property and Equipment (Net)                       | \$401,132           |
| Property Held for Sale                             | \$2,720             |
| Beneficial Interest in Charitable-Remainder Trusts | \$99,669            |
| Beneficial Interest in Life Insurance              | \$170,534           |
| <b>Total Assets</b>                                | <b>\$37,519,335</b> |

### LIABILITIES

|                          |                  |
|--------------------------|------------------|
| Accounts Payable         | \$5,931          |
| Grants Payable           | \$265,000        |
| Scholarships Payable     | \$1,050          |
| Accrued Wages            | \$32,720         |
| Gift Annuities Payable   | \$45,351         |
| Long-Term Debt           | \$84,237         |
| <b>Total Liabilities</b> | <b>\$434,289</b> |

### NET ASSETS

**\$37,085,046**

The Putnam County Community Foundation is certified as meeting ethical and operational standards at both state and national levels, and obtains an external audit every year. Copies of the audit report including financial statements are available upon request.

## FINANCIAL ACTIVITY

### DURING THE YEAR ENDING DECEMBER 31, 2022

### SUPPORT AND REVENUE

|                                      |                      |
|--------------------------------------|----------------------|
| Contributions, Sponsorships & Grants | \$873,817            |
| Investment Returns                   | (\$4,998,047)        |
| Building and Other Income            | \$185,974            |
| CRT and Gift Annuity Change in Value | (\$39,926)           |
| <b>Total Support and Revenue</b>     | <b>(\$3,978,182)</b> |

### EXPENSES

|                                       |                    |
|---------------------------------------|--------------------|
| Grants, Scholarships, Projects (Paid) | \$1,164,951        |
| Program Related Expenses              | \$301,599          |
| Administrative Expenses               | \$311,191          |
| Fundraising Expenses                  | \$161,510          |
| Investment Fees                       | \$128,615          |
| <b>Total Expenses</b>                 | <b>\$2,067,866</b> |

|                                           |                     |
|-------------------------------------------|---------------------|
| <b>BEGINNING OF THE YEAR TOTAL ASSETS</b> | <b>\$43,543,917</b> |
| <b>END OF THE YEAR TOTAL ASSETS</b>       | <b>\$37,519,335</b> |



## Putnam County Community Foundation Team

The Community Foundation is committed to fulfilling our mission with the support of volunteer leaders and our team of employees. Our team strives to positively influence the community, display friendliness and professionalism, and create a measurable impact to all who encounter the Community Foundation.

### Employees



**Neysa Meyer**  
Executive Director



**Dean Gambill**  
Community Development Director



**Jenny Neureiter**  
Office Manager



**Sarah Stone**  
Communications Director



**Julie Thompson**  
Financial Services Officer

**Over 70  
Volunteers**

### 2022 Board of Directors



**Jeff McCall**  
President



**Marianne Savage**  
Vice President



**Kyle Beasley**  
Treasurer



**Kate Knaul**  
Secretary



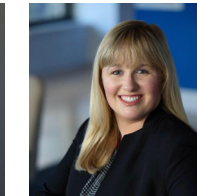
Scott Bieniek



Dakota Everts



Mary Gould



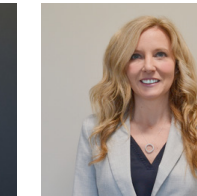
Stacey Hartman



Jane Huger



Jennifer Jackson



Amanda Laney



Jenna Lanham



Greg Linton



Austin Malayer



Carolyn Mann



Anthony Tillman



Dianna Whitlock

### 2022 Committees

#### Finance Committee

Kyle Beasley (Chair), Scott Bieniek, Mary Gould, Greg Linton, Cynthia Mattox

#### Governance & Nominations Committee

Marianne Savage (Chair), Jim Ensley, Phil Gick, Jennifer Jackson, Austin Malayer, Mitch Proctor, Vivian Whitaker

#### Grant Selection Committee

Dakota Everts (Chair), Jane Alcorn, Scott Bieniek, Jeff Boggess, Narda Cotton, Allison Creekmore-Long, Linda Gjesvold, Carolyn Mann, Debbi Steffy, Ben Wilkerson

#### Lilly Selection Committee

Jenna Lanham (Chair), David Gellman, Mary Gould, Troyanna Jefferson, Joanie Knapp, Travis Linneweber, Brad McClure, Nathan Scott, Pamela Steele

#### Philanthropic Development Committee

Jane Huger (Chair), Tosh Everson, Stacey Hartman, Paul Jedele, Mary Beth Kaiser, Laura Monnett, Ami Pennington, Andrew Ranck, Becky Samsel

#### Scholarship & Educational Attainment Committee

Kate Knaul (Chair), Jackie Eitel, Amanda Laney, Jenna Lanham, Dave Murray, Janet O'Hair, Anthony Tillman, Dianna Whitlock, Alan Zerkel

#### Youth Philanthropy Committee

Vivian Whitaker (Chair), Jane Huger, David Knott, Aiden Beadles, Jacob Beadles, Cory Branigan, Alaina Fritz, Elijah Hardwick, Brock Heavin, Isaac Hertenstein, Caroline Hodge, Catherine Hodge, Maximus Kaufman, Madelyn Landry, Emily Mann, Gunner Roach, Gabrielle Simonson, Jayden Simpson, Olivia Stewart, Ruby Sullivan



# 2022 Donor Honor Roll

9 East Bar and Grill  
Kenneth Abbring  
Abilities Services, Inc.  
Abstract & Title of Putnam County, Inc.  
ACE Corp  
Alan Ray and Diana Ader  
Vincent Aguirre  
J. Patrick Aikman  
Stephen Aker and Vicki Timm  
Barbara A. Aker  
Ron and Jane L. Alcorn  
S. Paul and Sally K. Alexander  
Ashley Alexander  
William Allan and Linda S. Allee  
Rudy Allee  
Lannie Allee  
Robert F. and Patsy M. Allen  
Robert Bayard Allen  
Alpha Company Tumbling and Cheer America's Charities  
B. Kim and Regina Ames  
Ames 4K Farms  
Misha Anderson  
Animal Medical Clinic  
Anthem Blue Cross Blue Shield  
Thomas and Pamela Apple  
David C. and Vicki L. Archer  
Tyler A. Archer  
Arlington/Roe & Co  
Marvin G. and N. Anita Arnold  
Julie Arnold  
Dale Freeman Arnold  
ASA Land Surveying  
Asbury Towers Health Care Center - SNF  
Randy, Katrina and Brett Asher  
Athens of Indiana Arts Studios & Gallery, INC.  
Attic Selfstor, LLC  
Brandy J. Ault  
Lynne Ayers  
Frank Bailey  
Bainbridge Alumni Association  
Bainbridge High School Scholarship Fund - Class of 1963  
Bainbridge Saddle Club  
Dr. Martin and Anna Baker  
Thomas E. and Jean Baker  
Lori Baker  
Glenn and Nora Baker  
Baker's Camp  
Gary Barcus  
Lisa Barker  
Tammy L. Barlow  
Darold R. Barnes  
Alice K. Bartley  
Gerald Bates  
James and Lauralee Baugh  
Dr. John Joseph and Elizabeth Baughman

L. Jean Baughn  
Peter and Suzette Bauman  
Joseph and Jackie Baumann  
Nancy J. Baumgart  
John and Janet Bazini  
Chad Beadles  
James Beall  
The Beaman Family  
Belle Union Class of 1957  
A. Scott and Deonna S. Bemish  
Dan and Kathleen Benassi  
Benton Community Foundation  
John P. and Barbara Z. Bergen  
Keith and Sharyl A. Berry  
David E. Berry  
Bieniek Law, P.C.  
Deborah F. Billmire  
Jinsie S. Bingham  
Charles Robert and Patricia Birkemeier  
Mary Anne Birt  
Richard and Christina Bittles  
Kevin Bitzer  
Terry J. and Dede Black  
Julie D. Black  
Josi Blanton  
Jeffrey O. and Judith L. Blaydes  
Ronald G. and Shannon Blotch  
Lloyd and Helen Blubaum  
Jon Blue  
M. I. Blue  
Buck Blue  
Barbara W. Boese  
Chris Bombei  
Stephen R. Bonney  
Donald L. and Martha G. Bosma  
David K. and Marcia F. Boswell  
Joel Bottom  
Todd and Crenda Bottorff  
James B. and Pamela K. Bowman  
Lea Bowman  
Cathy Ann Boyce  
William D. Boyd  
Keith Alan and Shirley J Brackney  
Brackney Insurance Group Inc.  
Von Braden  
Nikolaus T. and Tiffany Braeger  
Patricia C. Brandt  
Kalen Brattain  
David Bray  
Mary Bretscher  
Chris Brewer  
Sara J. Bridges  
Brightside Financial Care, LLC  
Freeman K. and Mavis M. Broadstreet  
Howard L. and Marilyn K. Brooks  
James and Tammy Brothers  
Ron Brothers

Mary Bruce  
Alan and Barbara W. Bryan  
Clark A. and Bonnie L. Bryan  
Nathan C. and Leeann F. Bryan  
Bryan Family Farms  
Hobert and Kay Buchanan  
Valerie J. Buchanan  
Debra E. Bunn  
William and Victoria Burgman  
William J. Burk  
Jordan Burkett  
Roger Busch  
Abbie Bush  
Maurice D. and Carolyn S. Butler  
Butler's Skelgas, Inc.  
Barbara Lee Butts  
Buzzi Unicem USA  
Sara Campfield  
Barbara Canada  
Duane W. and Karen J. Canfield  
Dale E. and Velvet Cantonwine  
Freeman and Tina Capps  
Bradley E. and Gwen J. Carlson  
Jane Hughes Carlson  
Kenneth Carrington  
Deanna Carrington  
Dale A. and Rebecca S. Carter  
Matthew Carter  
Cash Concrete Products, Inc.  
Bradford S. and Ceciley M.S. Casselman  
Cedar View Farm LLC  
CenterPoint Energy Foundation  
Ronald and Sheila J. Chadd  
David Leon Chalk Jr.  
Alexandra B. Chamberlain  
Rev. Dr. Paul H. and Margaret B. Champion  
Richard F. and Elaine S. Chase  
Paul A. and Janet S. Chovan  
Elizabeth Christiansen  
Katrine Christiansen  
Nick Wayne Claycomb  
John A. and Christine M. Cleveland Jr.  
Daryn and Meredith Clifford  
Gene and Nancy M. Clodfelter  
John and Cathy Clodfelter  
Philip A. and Darla S. Clodfelter  
Closed Circuit Audio & Video/The Gould Group LLC  
Cloverdale Agri Center, Inc.  
Cloverdale Community Dollars for Scholars  
Cloverdale Community School Corporation  
Cloverdale FFA Alumni  
Co-Alliance, LLP  
James W. Cobb Trust/Estate  
Earl and Sally Coffman  
Linda Coffman  
Adam D. Cohen

Abigail Coleman  
Bradford H. and Nancy L. Collins  
Clyde D. and Karen Compton  
Judith A. Compton  
Brian Raphael Cook  
Charles A. and Karen Sue Cooper  
Jean Marie Cooper  
Janet U. Cooper  
David K and Marla L. Corbin  
Susan M. Corder  
Robert W. and Joan S. Corns  
S. Page and Narda G. Cotton Jr.  
Darlene E. Cox  
Dorothy Boyd Crawley  
Tommy N. and Kellina L. Croan  
Joe and Susan Crosby  
Thomas Crosby  
Todd Crosby  
Crossroads Care Pharmacy  
Culligan Water of Putnam County  
Dalco Overhead Doors  
Cheryl Danberry  
Jon Davidson  
Christopher L. and Amy D. Davies  
Eric Layne and Joan K. Davis  
Scott Davis  
Alec Davis  
Ronald J. and Ruth E. Dean  
Donna DeBoer  
Floyd S. and Donna F. Decker  
Deer Creek Cemetery Fund  
DePauw University  
Dan and Jessie Detro  
Detro Trailers LLC  
Ann Elena Osborn Dever  
Ronald L. and Trudy L. Dickerson  
Michael B. and Tiffany B. Dickson  
Digital Sounds DJ  
Charles and Yvonne Dixon  
George M. and Della R. Dixon  
Lucy Dold  
Michele Thomas Dole  
Deborah L. Donelson  
Lee A. and Janice P. Dorsey  
The Honorable William A. and Kathryn Dory  
Nanci G. DuBois  
Rebecca L. Dull  
Scott D. and Lynda R. Dunbar  
Christina Marie Duncan  
Gerald R. and Miriam Durham  
Ray Dutcher  
Roderick R. and Tracy E. Earley  
Cody Eckert  
Edge 21  
Edward Jones  
Jacob Eitel  
Kenneth J. and Jacquelyn A. Eitel Jr.

Sharon A. Ellett  
Dr. Russell P. and Carolyn Elliott  
Julie Ann Elmore  
Endeavor Communications  
David and Margaret English  
James and Cathryn Ensley  
Patricia Carol Ersland  
Scot W. and Karen Evans  
Jack Evans  
Mark Evans  
Robert W. Evans  
Pamela Evans  
Joel Everson  
Stanley and Linda Everts  
Dakota Everts  
Jennifer Faletic  
Farm Credit Services of Mid-America  
James C. and Melanie S. Fasone  
David and Shana Faust  
Kristi Feasel  
Joe and Rita P. Ferguson  
Victor and Tami J. Ferguson  
Larry and Donna Fidler  
Bethany Fiechter  
Fighting Chance Medical Training LLC  
Fillmore United Methodist Church  
Darrell G. and Barbara Fine  
First Baptist Church - Koinonia Small Group  
First Baptist Church  
First Baptist DORCAS Circle  
First National Bank  
Jennifer Kathleen Fischer  
Joel and Lauren Flanders  
Chris Flegal  
Jeffrey D and Shirley Flint  
Barbara Flint  
William T. Flint  
Judith A. Flint  
Roberta Diane Flint  
David and Bonita Flora  
Keith and Stephanie Ford  
William and June Foreman  
Chester S. Fornari  
Betsy Fouts  
Rick and Cindy Fouts Stone  
William F. and Peggy J. Fox  
Evelyn M. Frank  
John C. and Sue Ann Frazier  
Eric Freeman  
Friends of CMMC  
Frontstream SPV LLC  
Kristen Fuhs Wells  
Juan Galeano  
Dean A. and Anita J. Gambill  
Ann Garceau  
Brian Gardner  
Cassandra Garrett

Dr. Glenn C. and Julie Gass  
Dr. Kenneth B. Gass  
Margery and Fredrick Gass  
Gavilon Global Ag Holdings, LLC  
Kathryn L. Gedert  
Dr. David Gellman  
Jim and Judith A. George  
GHS Class of 1962  
GHS Class of 1963  
Bruce Gibbs  
Jennifer Gibbs  
Camryn Marie Gibson  
Gibson Foundation Inc.  
Phillip and Susan C. Gick  
Hannah Giere  
Brian G. and Linda R. Gilmartin  
Linda J. Gjesvold  
Gladys Prichard Farms, Inc.  
Alan and Susan M. Glaser  
Glenview Village HOA, Inc.  
Laurie L. Gobert  
Gobin Memorial United Methodist Church  
Teresa Goddard  
Renee Goodman  
James L. and Debbi Goodson  
Gary and Janet Gordon  
Michael and Rita K. Goss  
Mary Goss  
Norvin L. Gottula II  
John M. Gough  
Melissa Gough  
Jacob and Madison Gould  
Eugene D. and Cheryl L. Grable  
Dr. Thomas Hale Graffis  
Maria Grantner  
Shannon Green  
David S. and Alice A. Greenburg  
Greencastle Alumni Dollars For Scholars, Inc.  
Greencastle Arts Council, Inc.  
Greencastle Veterinary Clinic  
Greene County Foundation  
Greene Realty, LLC  
Greene's Roll Off Services, LLC  
Sandra Gregory  
Kathryn Gross  
Mark D. and Robyn Gunnoe  
Daniel and Stephanie Gurnon  
David J. and Sheridan L. Hadley  
Jacob A. and Lavinia M. Hale  
Amy R. Hale  
R. Chase Haltom  
Kyle Ham  
Mark Hammer  
Edward N. and Cheryl R. Hammond  
Hand in Hand Creative Learning  
Kristie Hankins  
Jane E. Hansen





# 2022 Donor Honor Roll

Russell and Mary Alice Harcourt  
 Ronald L. and Martha A. Hardman  
 Cody Hargis  
 Michael M. and Susie M. Harmless  
 Barry and Constance Harrison  
 DeNiece Harrison-Hudson  
 Jason T. and Stacey Hartman  
 Oliver and Jeannie Haste  
 Hayes, Murphy, Sharp & Brackney Insurance Services, Inc.  
 Eric and Shirley Hayman  
 David Hazelton  
 Dr. Anthony D. and Karen Heavin  
 Dr. Robert A. Heavin  
 Michael and Arlene Hecko  
 Bob and Sherry Hedge  
 Kenneth R. and Joyce A. Heeke  
 Helmer Appraisal  
 Hendricks County Senior Services  
 Hendricks Power Cooperative  
 Dr. Jon R. and Janis R. Hendrix  
 John and Cindy Hennessee  
 Robert L. Hensley  
 Heritage Environmental Services, LLC  
 Heritage Fund - The Community Foundation of Bartholomew County  
 Heritage Lake Property Owners Association  
 Heritage Lake Scholarship Fund  
 Heritage Preservation Society of Putnam County, Inc.  
 Malcolm and Peggy Herring  
 Loren J. and Patricia A. Hetrick  
 Joel and Angela Hettmansperger  
 Roy D. and Elizabeth L. Higgins  
 Glenn and Lori Hile  
 Alan P. and Jennett M. Hill  
 Roger S. and Barbara J. Hines  
 Harold and Carolyn R. Hiser  
 Historic Vevay Inc. - Hoosier Theater  
 Paul and Jennie Hodgen  
 Abe Hodgen  
 Dr. Daryl W. and Janice P. Hodges  
 Mark and Jennifer Hoke  
 Larry Hollan  
 Woodland W. and Sherri L. Holm  
 Holm Design/Holm Engineering  
 Diana Holsapple  
 Audra Holton  
 Holton Holdings, LLC  
 Steven Holwerda  
 Bev Hoops  
 Hoosier Heartland State Bank  
 Phyllis Hoover-Bornstein  
 Ernie and Bonnie L. Hopkins  
 Judith Hornaday  
 David and Carolyn Houck  
 Janet Hroch

Brian P. and Sandra S. Huber  
 Earl F. and Annette M. Hubert  
 Phil and Cathy Huestis  
 Melissa Huffman  
 Duane L. and Jane A. Hugel  
 Mariah Hugel  
 Mary Ellen Huggard  
 Ashley Hugues  
 Karissa Hulse  
 Phil and Joyce Humphreys  
 Brian and Kandy Humphreys  
 Camron Humphreys  
 Nicholas Hutcheson  
 Whitney Hutcheson  
 Ronald W. Ikamire  
 Indiana Department of Transportation  
 James C. Luzar and Ella L. Ingram  
 R. Neil & Michele Irwin  
 Jeff and Jennifer Jackson  
 Rex A. and Jennifer S. Jackson  
 James Jackson  
 Luella Jackson  
 Esther Lucinda Jacoby  
 Thomas L. and Sara L. Janson  
 Nicole Jarboe  
 Janet Jayne  
 Paul R. and Kara Jedele  
 Robert and Jamie Jedele  
 Sharon E. Jenson  
 Nicole Jernagan  
 Cary and Sheila Johnson  
 David S. and Ja-Deen Johnson  
 David and Joyce Johnson  
 Greg A. and Karen Johnson  
 Cary Johnson  
 Keith Johnson  
 Wendy Johnson  
 Rick and Cammie Johnston  
 Christopher L. Johnston  
 C. Kevin Gough and Paula M. Jones  
 Kim and Cindy Jones  
 Mary Jane Jones  
 Edward C. Jones  
 Margaret S. Jones  
 Jamie Jost  
 JTN Services, Inc.  
 Justin Thomas Judy  
 Judy Automotive Center LLC  
 John and Carie Junkers  
 Just R Time Construction LLC  
 Kappa Kappa Kappa, Inc.  
 Patti Katter  
 Heather Keil  
 Devon Grace Kelsey  
 Wesley S. and Anna C. Kendall  
 Bob and Lisa Kendall  
 Mary H. Kennedy

Margaret M. Kenton  
 Jeffrey Scott and Michelle Kiger  
 Connie J. Kiger-Bourne  
 Kay Kim  
 Josh King  
 Judith King  
 Lisa K. Kirk  
 Larry J. and Gail I. Klein  
 Danka Klein  
 Judith Kleine  
 Raymond Klipsch  
 Kathleen Knaul  
 Knights of Columbus  
 David Glenn Knott  
 Dr. Dennis M. and Emily J. Knuth  
 Bonnie and Micha Koepfel  
 Amber Ewing Kostoff  
 Eduard and Ashley Koulak  
 Milton B. and Margaret J. Krahn  
 Jack D. and Janice Krebs  
 James Kreher  
 Curtis C. Krominaker  
 Courtney Kwon  
 Lairs BBQ Shack LLC  
 Donald R. and LaConda J. Lambermont  
 Amanda Laney  
 Rick and Stacie E. Langdon  
 Dakota M. and Jenna M. Lanham  
 Larkin Charitable Fund  
 Dr. Greg and Lisa Larking  
 Rodney Lasley  
 Lawson & Co.  
 James L. and Jo Ellen Leach  
 M. Suzanne Leeke  
 Mark Legan  
 Legan Livestock & Grain, Inc.  
 Leon Global Logistics  
 Dr. James C. Lett Jr.  
 Gerald R. and Rose Marie K. Lewis  
 M. Todd and Katrina Ann Lewis  
 Sue Lieb  
 Mary Jane Jones  
 Lisa Lien  
 William W. Lindley  
 Janet S. Lindley  
 Jeffrey J. and Susan I. Linn  
 Larry L. and Eleanor Linneman  
 Travis and Megan Linneweber  
 Donald J. and Judy A. Lisby  
 C. Mytron Lisby  
 David J. and Natalie W. Little  
 James Jr. and Carrie Little  
 Littrell Masonry  
 Louis Edward Livingston  
 Catherine Lockhart  
 Claudia V. Lopez  
 William A. and Susan M. Lorimer  
 Kenneth Losin

Robert J. and Patricia H. Lowe  
 Jennifer L. Lowe  
 Cathy Lowery  
 Loyal Order of Moose Greencastle Lodge 1592  
 Willaim Michael Lynch  
 Lynne Tweedie  
 Myrna C. MacArthur  
 Warren and Connie Macy  
 Keith and Jennifer Maddox  
 Kendol Maddox  
 Gary A. and Linda L. Magee  
 Judith Colby Magyar  
 Main Street Greencastle, Inc.  
 Brad and Shelle Malayer  
 J.C. and Rachel Mandeville  
 Fred and Linda Mann  
 Robert Nelson Mann  
 Carolyn Mann  
 Jonathon Maple  
 Mariette Barga  
 Gary and Patricia Martin  
 Robert J. Martin  
 Mason Investment Advisory Services Inc.  
 David C. and Teresa L. Masten  
 Masten Real Estate Holdings, LLC  
 Timothy J. and Jody L. Matthews  
 Dwight E. Matthews  
 Cynthia J. Mattox  
 Max Williams Tree Service  
 Errol J. and Judy K. McBride  
 Dr. Jeffrey M. and Catherine McCall  
 Gary L. and Patricia A. McCastle  
 Kristin McClellan  
 Colleen McCracken Renick  
 Pat and Sue McCune  
 McDonald's  
 Paul and Betty McGill  
 Maurice L. and Teresa J. McKee  
 Marie McKee  
 Kimberly A. McMains  
 Lynn M. Mealy  
 Mildred L. Meehan  
 Memorial Menders  
 Albert R. and Anne D. Menard  
 Mental Health America of Putnam County  
 William J. and Linda D. Merkel  
 Adam and Neysa Meyer  
 Pete E. and Julie Meyer  
 Judith A. Meyers  
 John B. Michael  
 Candace Michael  
 Ann B. Michael  
 Mickey's Camp  
 Robert and Donna Miles  
 Douglas W. and Patricia A. Miller  
 James D. Miller

Jeff Miller  
 Judy A. Miller  
 Beva Miller  
 Cynthia M. Kander Miller  
 Heather Mills  
 Sandra A. Mills  
 Patty Minnick  
 Devin and Tina Mitchell  
 Mark E. and Lisa Harris Mock  
 Christopher P. and Dancie Jo Moore Mohler  
 Jason and Brandi Monnett  
 Scott and Laura Monnett  
 Keith A. Monnett  
 Montgomery County Free Clinic, Inc.  
 Montgomery County Historical Society  
 Montgomery County Leadership Academy  
 Charles K. Moore  
 John M. Moore  
 Sue Anne Moreland  
 Thom and Gwen Morris  
 Robby Munoz  
 Michael A. Murphey  
 Caitlin Murphy  
 Michael Murphy  
 David and Susan Murray  
 Greg Murray  
 Janet K. Musser  
 Mitchell Myers  
 Linda and Bob Nachtrieb  
 Rebecca K. Nachtrieb  
 Aaron Nance  
 John and Jessica Neace  
 Neace Construction Services, Inc  
 Jenna Nees  
 Gary L. and Deanna Neese  
 Judy A. Neikirk  
 Nicholson Consulting  
 Helen E. Noble  
 Jenny Noll  
 Pete and Donna Norris  
 North Putnam Alumni Association Dollars for Scholars  
 North Putnam High School  
 North Putnam Touchdown Club  
 North Salem State Bank  
 William B. Nunn  
 Oaktree Financial Advisors, Inc.  
 Pat and Paula O'Brien  
 Samuel T. and Mary Jean Ochs  
 Clarence C. and Doris O'Hair  
 Dennis D. and Janet S. O'Hair  
 John Wesley and Marcia A. O'Hair  
 Marion and Valerie O'Hair  
 Andrew O'Hair  
 Jonathan and Amanda O'Kane  
 Curtis W. and Mary Olsen  
 On Target

John and Darla J. Oostendorp  
 Jacob M. and Erika L. O'Rourke  
 Kristin Osborn  
 Bonnie Lynn Osborn  
 Linda J. Owen  
 Sarah H. Owen  
 Owen County Community Foundation, Inc.  
 Matthew Owens  
 Owen's Outdoor Maintenance  
 Ronald A. and Alma J. Padgett  
 Pam's Promise Transitional Housing Corp.  
 Sherith H. Pankratz  
 Rick and Judith Parent  
 Doug and Staci Parent  
 Lyndi Parent  
 David A. and Tammi M. Parker  
 Carolyn Parker  
 Steve Parker  
 John Parmley  
 PDM Aviation LLC  
 Edward N. and Sharon K. Pearson  
 M. Elaine Peck  
 James Martin Peck  
 Veronica Pejril  
 Ami Pennington  
 Thomas C. and Amy E. Perrin  
 Brian Pershing  
 Marvin Peters  
 Joe Peterson  
 Sarah Phelps  
 Phi Delta Theta Parents Club  
 Rachael Phillips  
 E. June Pickens  
 Pingleton Sawmill, Inc.  
 Justin Ray Alan Platt  
 Marlene A. Poynter  
 Poynter Farms  
 Murray and Sara Pride  
 Chip and Amy Pride  
 Prime Real Estate Group  
 Mitchell R. and Judith Lynn Proctor  
 Pamela M. Propp  
 Purdue Club of Putnam County  
 Purdue University  
 Putnam County 4-H Dog Club  
 Putnam County Board of Realtors  
 Putnam County Comprehensive Services  
 Putnam County Fair & 4H Club Association  
 Putnam County Farm  
 Putnam County Hospice and Palliative Care Association  
 Putnam County Hospital  
 Putnam County Kids Count Inc.  
 Putnam County Museum, Inc.  
 Putnam County Pantry Coalition  
 Putnam Plastics Incorporated  
 Putnam Seed Service



# 2022 Donor Honor Roll

David Puzan  
Brandi Query  
R and D Builders Inc  
R&S Rentals  
Jerry D. Raab  
Jeffrey J. Raab  
Tina Raider  
Christopher C. Rambis  
Brian K. and Lynn A. Ramey  
Andrew Ranck  
Nora J. Randle  
Larry Ratcliffe  
Chuck Ray  
Amanda Reed  
Katrina L. Reedy  
Larry L. and Angela B. Reis  
P. James Renz  
Danielle Rich  
Jeffrey Rich  
Roger A. and Susan K. Rigger  
Eleanor C. Riggs  
Ashley Riggs-Zeigen  
Ripley County Community Foundation  
John A. and Mary Margaret Rissler  
Mike and Becky Roach  
Charles W. Roach  
Gunner Roach  
Roachdale Building Supply  
David L. and Jacqueline R. Roberts  
Sally D. Roberts  
Lauren Rochester  
Michael and Wendy Rogers  
Phyllis Rokicki  
Malcolm S. Romine  
Ronald and Nancy Livesay  
Dennis R. and Samantha A. Roper  
Rhonda Rossok  
Gregory K. Ruark  
Valerie Rudolph  
Robert J. Russell  
Evans Rust  
S5 Investments LLC  
Charles F. and Mary Ann Saathoff  
Saint Mary-of-the-Woods College  
Danny and De Sanders  
Mary Sanders  
Steve and Debbie Sands  
Monica Sargent  
Dr. John and Marianne Savage  
Judith C. Schaab  
Judi M. Scheer  
Rita Schendel  
Larry and Lana Schimpf  
William and Carol Schlesinger  
David W. and Amy L. Schneider  
George A. and Susan Schneider  
Norbert P. Schott

Wayne P. and Myra A. Schuetter  
J.R. and Ginger Scott  
Larry and Lora J. Scott  
Jessie Scott  
Martha D. Sechman  
Dr. Robert P. Sedlack  
Selective Insurance Company of America  
Vaughn M. and Cheryl R. Selvey  
James W. and Anne Sewell  
Jimmy and Autumn Shake  
Alicia C. Shaw  
Tatsunori Shigetate  
Timothy K. and Kim E. Shinn  
Heather Shirk  
Johanna Shirley  
Rodney Shoemaker  
Michelle Shorter  
William D. and Polly B. Shuee  
William M. and Kaytlynn M. Shuee  
Bobby J. Siefert  
Jeffrey and Denise Sigworth  
Rodney L. and Jacquelyn S. Simpson  
William C. and Virginia L. Singleton  
Karen P. Singson  
J. Larry and D. Mary Skinner  
Gloria Skipworth  
Doug and Jana Smith  
Ernest E. and Bonnie J. Smith  
Mark W. and Margaret Smith  
Michael J. and Janice V. Smith  
Samuel J.L. and Whitney A. Smith  
Amy Smith  
Colin and Loretta Smith  
Larry Smith  
Ruby B. Smith  
Gail A. Smith  
Ryan M. Smith  
Dr. Mark A. Smith D.D.S.  
Shane Sommers  
Elizabeth A. Spencer  
Martin and Ann Spitz  
St. Paul the Apostle Catholic Church Ladies Guild  
Daryl and Darla Staley  
Piper Stamper  
Shelly Starbuck  
State Employees' Community Campaign  
State Farm Insurance - Brad Tucker  
State Farm Life Insurance Company  
Dale K. and Jean E. Steele  
Robert and Pamela Steele  
Dr. Jack Steele  
Norman R. Steele  
Dr. John B. Stephens  
Cheryl E. Steuerwald  
Rachel Stevenson  
Stevenson Farms

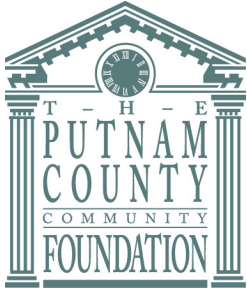
Shirley Steward  
Lee M. and Susan J. Stewart  
Mike Stewart  
Fauneil Stewart  
Carrie Stiff  
Tom Stocks  
Ruth Stone  
Kaitlin R. Strauss  
George A. and Ruth E. Stultz  
Michael E. and Debra M. Summers  
Janelle Summers  
Richard and Sally E. Sunkel  
Dallas and Opal Sutherlin  
Joann Hubble Sutherlin  
Larry G. and Patricia H. Sutton  
Marilyn Taylor  
Taylor Made Awards  
Teachers Credit Union  
Brian Lee Tefertiller  
Gail M. Tharp  
The Bearded Painter  
The Blackbaud Giving Fund  
The Blue Caboose Inc.  
The Community Foundation of Greater Lafayette  
The Green Fields Group, Inc.  
The Rustique Boutique, LLC  
Theta Chapter Delta Theta Tau  
Darrel L. Thomas  
Henry U. and Nancy E. Thomas  
John and Jean Thomas  
Steven R. and Margaret H. Thomas  
Gerel and Mary Lynn Thompson  
Don and Sharon Thompson  
Gerrit N. and Julie A. Thompson  
Richard A. and Clara M. Thompson  
Troy and Shelly Thompson  
Anthony Tillman  
Glenna J. Timmons  
Larry Tippin  
Donna L. Tippin  
Eric J. and Lois K. Tomaskovic  
Toyota  
Tri-County Bank & Trust  
June and Paul Tsoi  
Al and Joan Tucker  
Thomas L. Turk  
Marian R. Stamper Ullrich  
UMAC  
Lyle E. and Peggy D. Underwood  
United Way of Central Indiana  
University of Indianapolis  
Vanguard  
Jim, Barb and Sam Vaughn  
Jody Verplaetse  
Marvin Lee and Becky Voyles  
Wabash Capital

Wabash Valley Community Foundation  
Daniel J. and Megan N. Wager  
Ella L. Wagner  
Kylie Wainman  
Joseph C. and Marilynn A. Walden  
Janet G. Walker  
Linda Sue Wall  
Warren County Community Foundation  
Watchman Roofing LLC  
Dr. Thomas A. and Lynn H. Webb  
Dave and Sandy K. Webb  
Catherine A. Weidenbener  
Kathryn Weinrichter  
D. M. Weisbard  
Matthew Welker  
David and Amelia L. Wells  
Greg and Kim Wells  
Lisa C. Wesley  
West Central Veterinary Services  
Jennifer Whaley  
Judy Whitaker  
Michael H. and Linda L. White  
Reed D. and Carol L. Whitesel  
Darren Isaac and Renee Wiatt  
Chris and Nicki Wiedeman  
Benjamin Wilkerson  
Regan Wilkinson  
Lloyd J. Willever  
David and Carol A. Williams  
Jerry L. and Sandra L. Williams  
Kerry L. and Pamela J. Williams  
Maxine Williams  
Williams Dirt Service, LLC  
Williams Tree Service Inc.  
Jerry W. and Linda R. Williamson  
Christopher S. and Melissa A. Wilson  
Tom L. Wilson  
Dale A. and A. Nicholle Winger  
Rodger A. and Deborah S. Winger  
Marilyn Winters  
Wired LLC  
Hollie Wokoun  
Eric Wolfe and June Javens-Wolfe  
John R. and Linda Wood  
Dr. Nicholas Woodall  
Rick Allen Woodall  
Timothy W. and Jeannine A. Woodley  
Heather Wright  
Tim and Robin Wyatt  
John G. and Anstiss C. Wynn  
YMCA of the Wabash Valley, Inc  
Nickolas C. and Kaye E. York  
Rick and Jane York  
Nick York  
Linda L. York  
Robert A. York Jr.  
Molly Yuska

Dr. David P. and Lorie Zandi  
Andrew Mike Zeller  
Alan C. and Mary K. Zerkel  
Mark and Patricia E. Zeronik  
Kimberly M. Zeronik

We are grateful to the generous individuals listed here whose donations make a difference in Putnam County today and forever. Our supporters are very important to us, and we make every effort to provide accurate and complete information. If you have a question or notice an error, please contact us so we can correct our records.





2 South Jackson Street  
Greencastle, IN 46135

NON-PROFIT  
U.S. POSTAGE  
PAID  
Permit No. 28  
Greencastle, IN  
46135



---

## Thank you to our Community Partners!



With additional support from: Buzzi Unicem USA, Prime Real Estate, Cloverdale Drugs, Abstract & Title.

Join these local businesses as a Putnam County Community Foundation Community Partner to make a meaningful impact in our community. Contact us to learn more.

